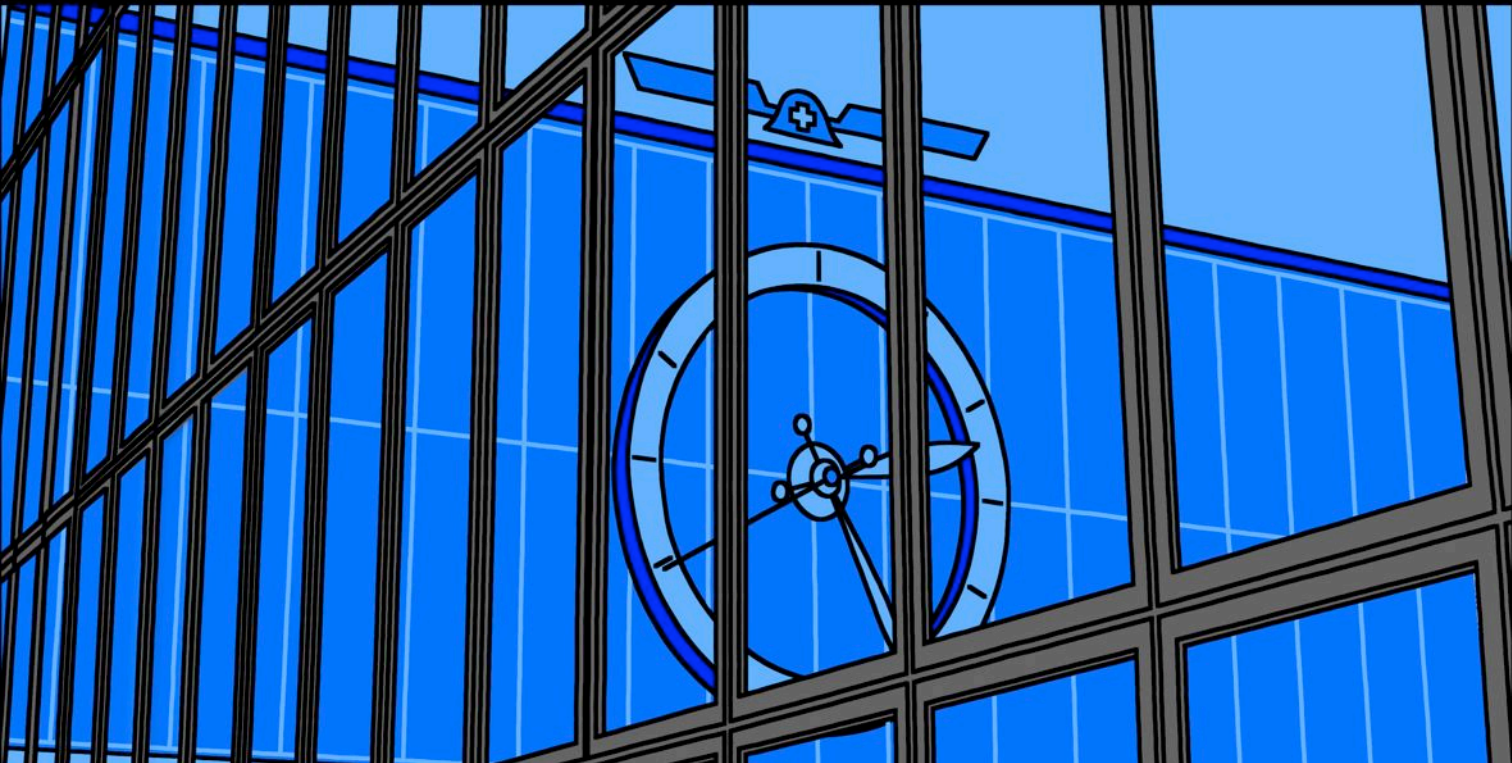
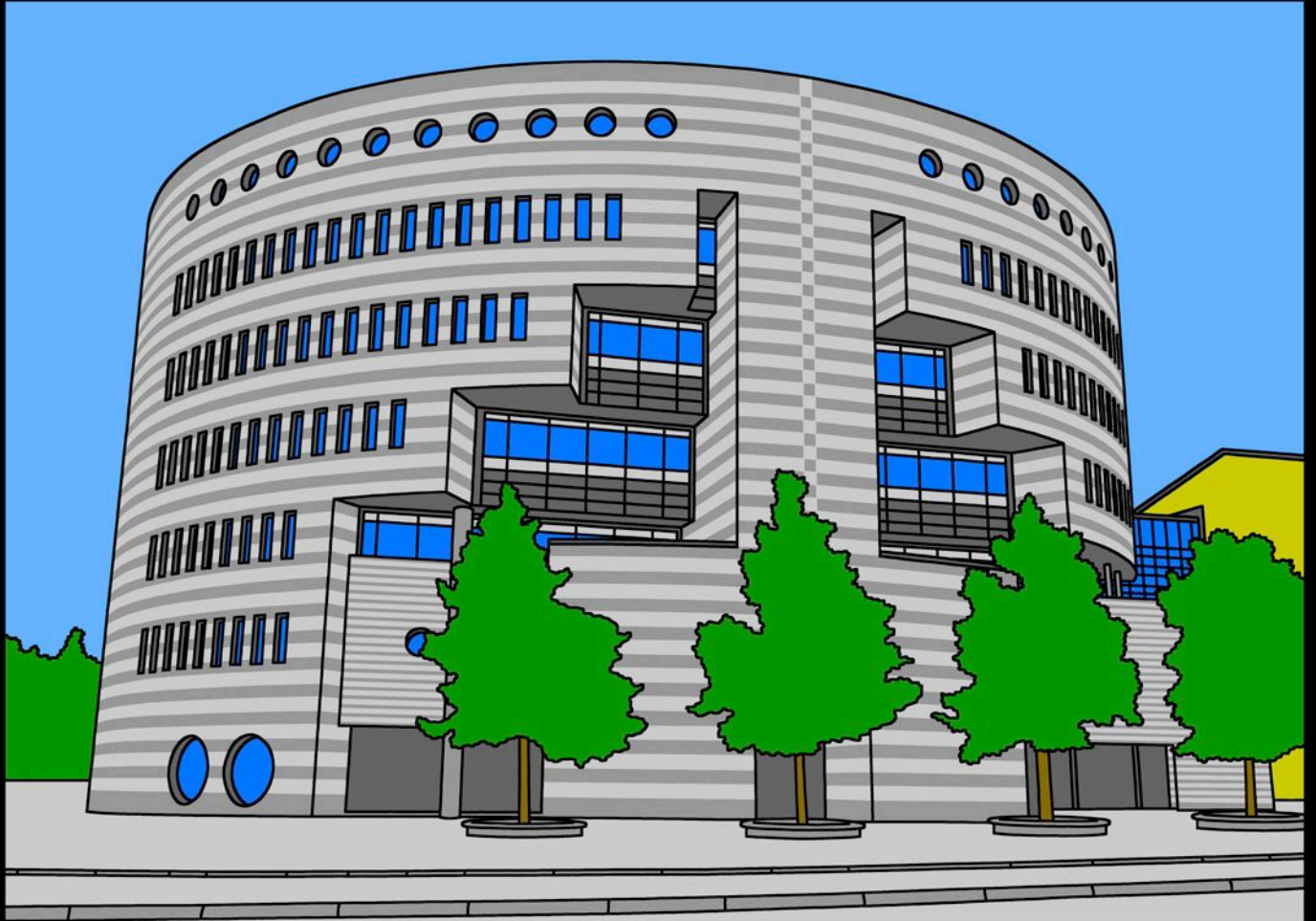


# BALE LIGNE CLAIRE







Yellow rectangular area on the left side of the building facade.

**Basel**   
www.basel.ch

欢迎 - 歡迎  
**WELCOME**

**WILLKOMMEN**  
今日は

ΚΑΛΩΣ ΗΡΘΕΣ!

**HALLO**

**CIAO**

நல்வரவு

**DOBRODOŠLI**

**BEM-VINDO**

ברוכים הבאים

ДОБРО ПОЖАЛОВАТЬ

**MERHABA**

**¡BIENVENIDO!**

**BIENVENUE**

**GRIEZI**

하여하하



**Basel**  
www.basel.ch

欢迎 - 歡迎  
**WELCOME**

**WILLKOMMEN**  
今日は

ΚΑΛΩΣ ΗΡΘΕΣ!  
**CIAO**

**HALLO**

**DOBRODOŠLI**

நல்வரவு

ברוכים הבאים

**BEM-VINDO**

**MERHABA**

ДОБРО ПОЖАЛОВАТЬ

**BIENVENUE**

¡BIENVENIDO!

**GRIEZI**

하여하 | 니





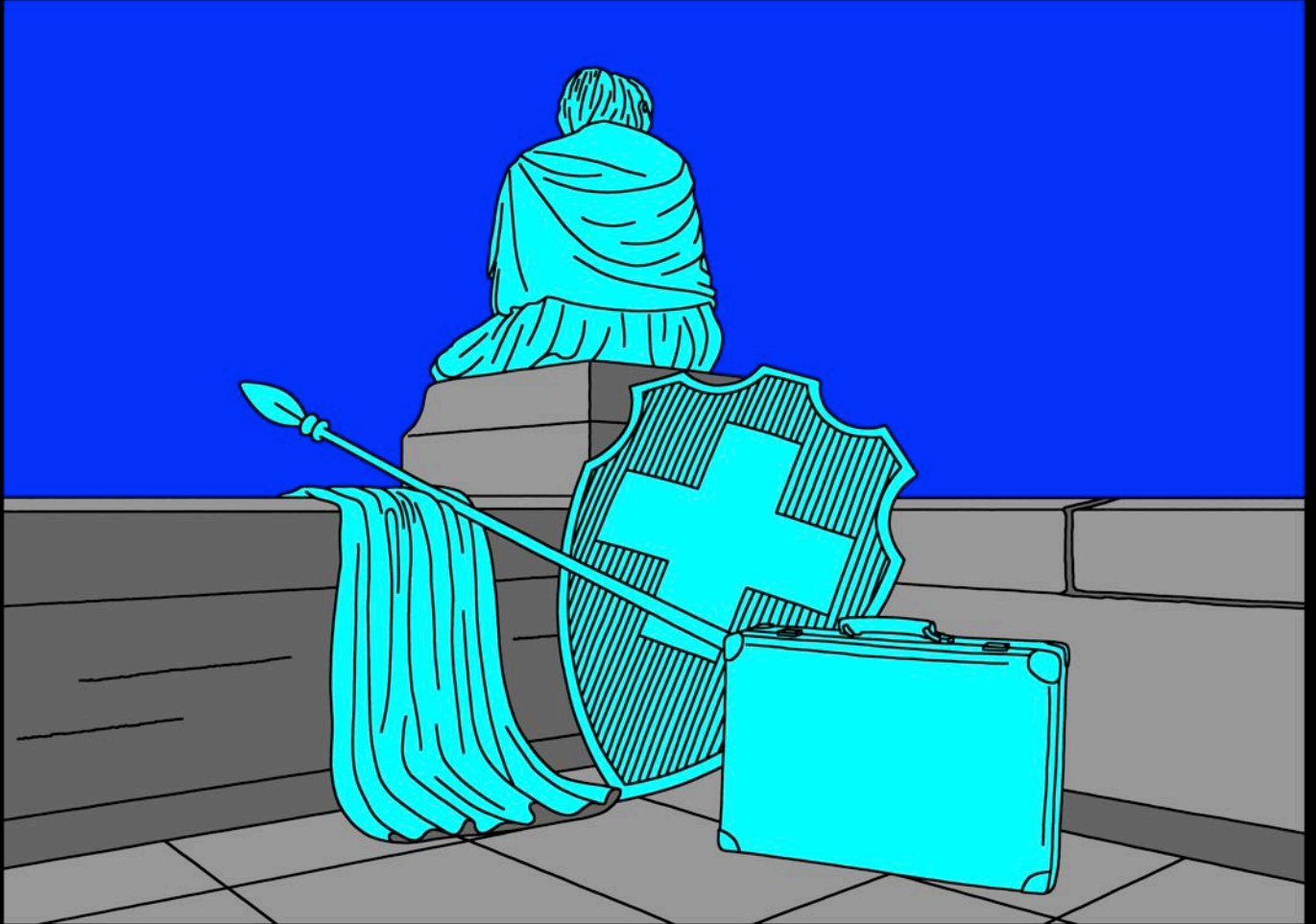


berg

Schlüss









**andré stauffer cheminet 3 1400 yverdon-les-bains**  
**tel: +41 24 426 61 55 [city.shadow@hispeed.ch](mailto:city.shadow@hispeed.ch)**  
**[www.salut.ch/stauffer](http://www.salut.ch/stauffer)**